



# weathertex

a better choice, naturally

Cladding | Panels | Weatherboards



## Product Portfolio

2019

The winning choice  
...naturally

**TRUSTED  
BRANDS** 2016  
ARCHITECTURE//DESIGN  
— WINNER No.1 BRAND —

**TRUSTED  
BRANDS** 2018  
ARCHITECTURE//DESIGN  
— WINNER No.1 BRAND —



**Winner Supplier of the Year 2018**  
Australian Construction Awards

**Winner Top Trusted Brand 2016-18**  
Architecture & Design

**Winner National Export Award 2017**  
Master Builders Australia

**Finalist Sustainability Awards 2017**  
Architecture & Design





Weathergroove 300 Natural (with battens)



Weathergroove 75 Smooth





We've gone  
*digital!*

All of our online services  
& tools are 100% FREE

### Product specification calculator

Find the right Weathertex products to suit your project design and performance requirements.

### Visualiser tool, 'Inspirational Designs'

Our newest Inspirational Designs Virtual App is ideal for exploring inspirational ideas or to visualise our wide range of profiles in your own design

### Order product samples

Visit any of the product pages on our website and simply add a sample to your cart, and we will deliver it to you for FREE!

### Take off/ Estimation Report

Simply fill in your details, attach your blueprints and we'll do the rest. We will be able to provide you with a full free takeoff report on Weathertex products and accessories required for your project.



# a better choice, *naturally*



## Made in Australia

Family owned and manufactured in the Hunter region, NSW since 1939.



## Trusted

WeatherTex voted #1 MOST TRUSTED brand in the building industry by Architecture & Design. Won SUPPLIER OF THE YEAR in the Australian Construction Awards.



## Sustainable

Better than zero carbon footprint with Third Party Credentials - GreenTag certification and Declare Labeling. Low embodied energy.



## Durable

Termite Resistant. Warranty tried and tested not to rot, split or crack for up to 25 years. Natural range is the only timber product in the market to provide a 10 year warranty. 1000 kg/m<sup>3</sup> product density with a minimum 32MPa rating. Watertight - no silicone controlled joints required. Mechanical flashing system.



## Value for Money

No special tools required for cutting. Large panels and lower wastage costs on Weathergroove Range. Lightweight product - reduces labour costs.



## Quick & Easy Installation

Direct fix to frame (exc Rubix). Larger panels for quick installation. 9.5mm thickness and matching accessories across all products making it easier to mix multiple profiles within a project. Easier to paint than other materials on the market due to its smoother surface. Lightweight product - under 10kg per square meter.



## Safe

Low VOC. Meets Australian Building Standards. 100% natural product. No glues, resins or formaldehydes.



## Stylish Choices

A wide selection of profiles available in various styles, textures and sizes. Easy to incorporate the natural with primed profiles together to offer multiple design options.



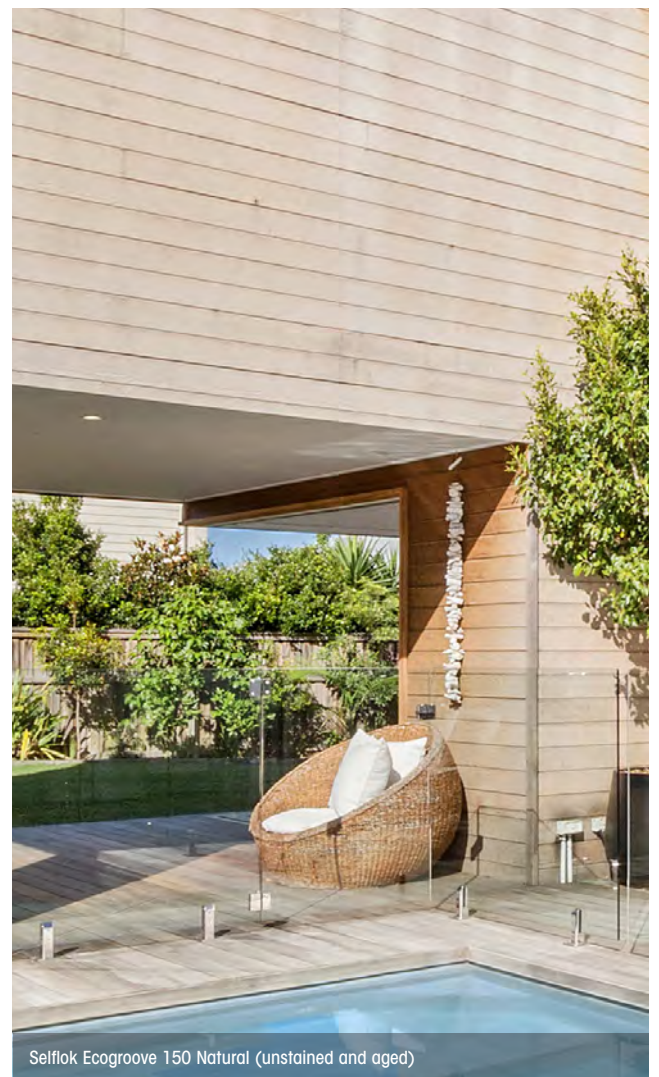
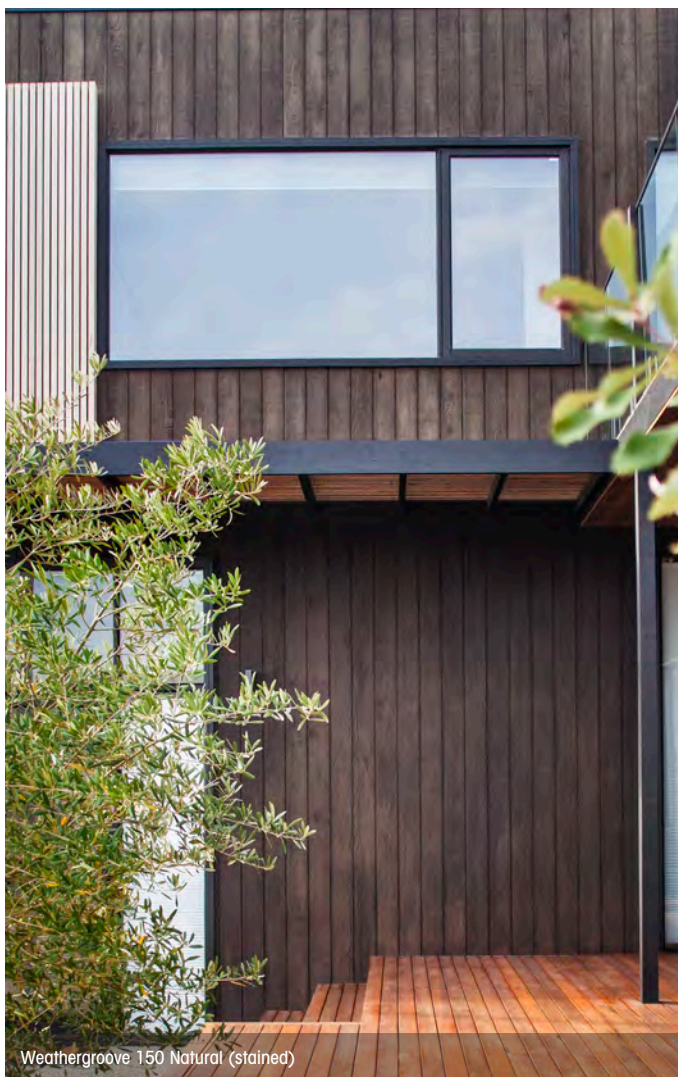
## Certifications

Responsible Wood & PEFC Certified

Part of the Declare labelling programme

Global Greentag<sup>cert</sup>™ Platinum & Gold Level A Certified







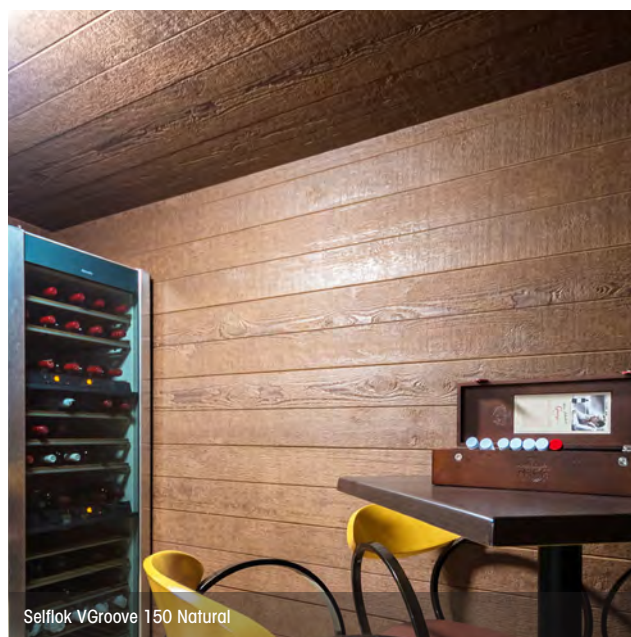
# Natural Cladding

The Natural range offers a unique appearance with the characteristics and looks of raw undressed timber. Its surface is pressed to create a random woodgrain effect, showing the knots, grains and imperfections of natural timber.

## Features & Benefits

- Made from real Australian hardwoods.
- Natural woodgrain appearance.
- The only natural timber product with a warranty. Ten year warranty not to rot, split or crack.
- Flexible and easy to bend.
- Various styles - Leave to silver off in direct sunlight, stain or a combination of both to produce totally unique colours.
- Global GreenTag Platinum certification if left unsealed.

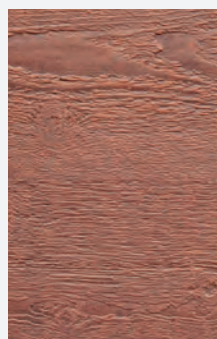
Weathertex can be used internally and as an external wall cladding in bushfire attack levels up to and including BAL 19 construction.



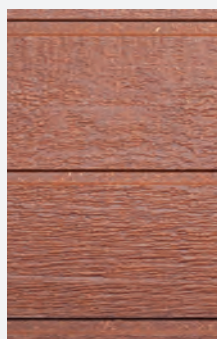
Selflok VGroove 150 Natural



Download the  
installation  
manual



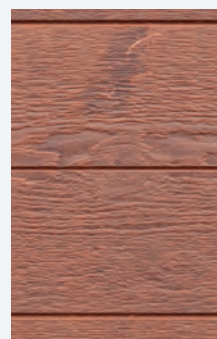
ECOWALL NATURAL  
3660 x 1220mm



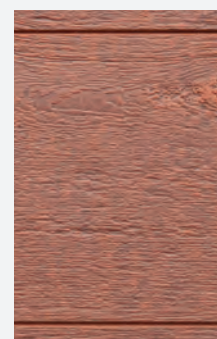
SELFLOK  
ECOGROOVE 150 ^  
NATURAL  
Width: 300mm



SELFLOK  
ECOGROOVE 300 ^  
NATURAL  
Width: 300mm



SELFLOK  
VGROOVE 150 ^  
NATURAL  
Width: 300mm



SELFLOK  
VGROOVE 300 ^  
NATURAL  
Width: 300mm



Selflok Ecogroove Range



WALL SHINGLES  
Length: 1195mm  
Width: 225mm



WEATHERGROOVE  
75 ^ NATURAL  
3660 X 1196mm



WEATHERGROOVE  
150 ^ NATURAL  
3660 X 1196mm



WEATHERGROOVE 300 ^  
NATURAL  
3660 x 1196mm

^ Refers to groove spacing. Also available in preprimed (excluding VGroove).

Cladding is 3660 mm in length and 9.5 mm in thickness.



# Natural *Styles*

## RETAIN ORIGINAL COLOUR



Weathertex Natural begins as a dark hardwood colour. Left uncoated it will lighten from UV and to retain the original colour the boards should be stained. Cabots Aquadeck New Natural or Intergrain Enviropro Cedar Cyprus will closest match the original colour, while Mahogany is a better colour choice for highly greyed off panels. We recommend a test spot before proceeding.

If you initially choose to lighten the boards but want to restore them to their original colour later, you can do so at any time. Clean the boards with Cabots deck clean or similar, and a sturdy deck clean brush before beginning the staining process.

## UNSEALED (Naturally Lighten)

Left to weather naturally by the sun, the timber will lighten and 'silver off' after a period of time. This can produce some beautiful results that become a unique feature of the construction. For best results use this technique on buildings that are exposed to full sun and aren't obscured by fences, trees or awnings. Weathertex is made with Australian hardwood timber and colours may slightly vary season to season.

To stop the silvering off process the boards can be stained at any time which will help protect the boards from the sun, as well as allow for a new spectrum of colours. Boards can be brought back to their original dark colour by first scrubbing with a deck cleaner and then applying the appropriate coloured stain.

## COLOUR STAIN & SEALED

Weathertex Natural range can be stained and sealed in the same manner as other hardwood timbers (such as timber decking). Wash the boards down first with Cabots deck cleaner, Intergrain Revive or a similar product. Make sure the boards are clean and dry before staining. When staining follow the direction of the cladding to ensure each board has an even coating.

Coat the boards with a soft brush first before cutting in the edges. Add another coat, then cut in again. Minimum of two coats required, a third coat is optional (check the stain guide for recommendations), and there is no need to cut in the edges again on the third coat. Keep a wet edge throughout to make sure visible layers aren't seen on the finished product. Stopping and starting during coating may lead to an uneven finish as the stain will dry in uneven layers.

We don't recommend a clear coat or varnish, as water based stains with pigment help protect the timber from UV. Maintenance of the stain is required to stop fading over time. Make sure to also follow the stain manufacturers directions, as they may vary between products.

Note: This project is only an example of the lightening and restoring process. Different projects will lighten at different speeds depending on location and exposure to sunlight.



**0 MONTHS:** Recently built, this shows the beginning colour of Weathertex Natural boards.



**4 MONTHS:** The board shows signs of lightening.



**7 MONTHS:** The board is continuing to lighten.



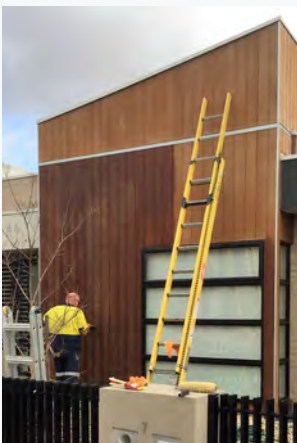
**17 MONTHS:** The boards are now a light blonde colour.



**36 MONTHS:** The boards are now very light, and are about to begin to be restored.



**CLEANING:** Wash the boards with a product like Intergrain Reviver or Cabots Deck Clean and a firm brush.



**STAINING:** Stain in the same direction that the boards run eg. Vertical for vertical cladding.



**COMPLETE:** After 3 coats the timber is restored and is now UV protected. Maintain the stain over time as per product directions to continue to protect the timber from UV rays.

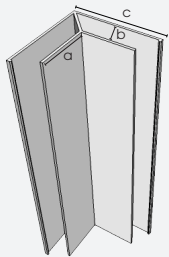


# Natural Accessories

## Trimtec accessories

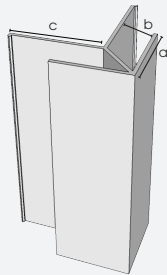
\* Made from anodised aluminium

### SMALL INTERNAL LF CORNER



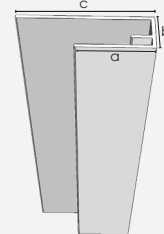
L = 3660mm  
a = 27mm  
b = 11mm  
c = 55mm

### SMALL EXTERNAL LF CORNER



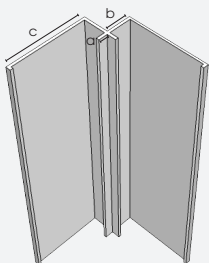
L = 3660mm  
a = 27mm  
b = 11mm  
c = 31mm

### SMALL END STOP



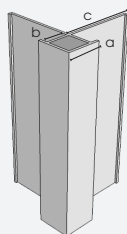
L = 3660mm  
a = 27mm  
b = 11mm  
c = 45mm

### SMALL INTERNAL CORNER



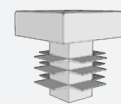
L = 3660mm  
a = 4mm  
b = 11mm  
c = 35mm

### SMALL EXTERNAL CORNER



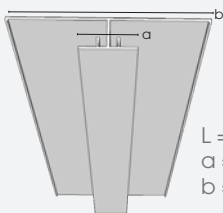
L = 3660mm  
a = 17mm  
b = 11mm  
c = 35mm

### SMALL CORNER PLUG



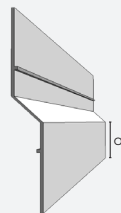
Use with the Small external corner

### LONG VERTICAL JOINER



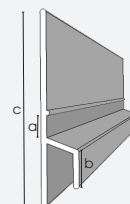
L = 3660mm  
a = 20mm  
b = 70mm

### Z FLASHING



L = 3660mm  
a = 27mm

### SMALL Z FLASHING



L = 3670mm  
a = 15mm  
b = 10mm  
c = 73mm

### DEEP CHANNEL JOINER LF



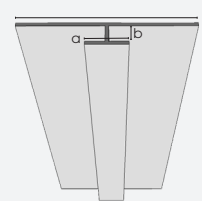
L = 3660mm  
a = 27mm  
b = 11mm  
c = 10mm  
d = 100mm

### DEEP CHANNEL JOINER



L = 3660mm  
a = 10mm  
b = 70mm

### WEATHERGROOVE JOINER



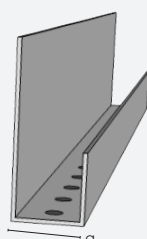
L = 3660mm  
a = 11mm  
b = 5mm  
c = 50mm



Weathergroove 150 Natural

## Cavity wall system (optional)

### CAVITY CLOSER



L = 1830mm  
a = Lrg 20mm  
= SmI 10mm

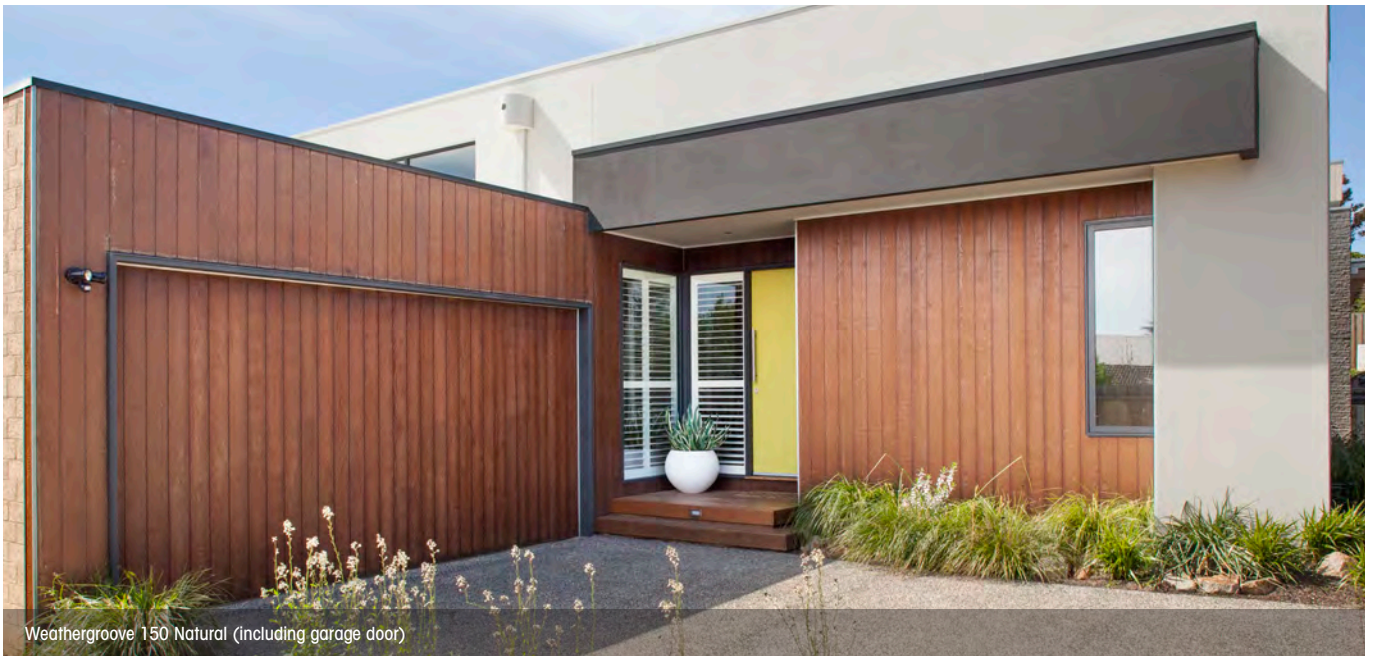
### CAVITY BATTENS



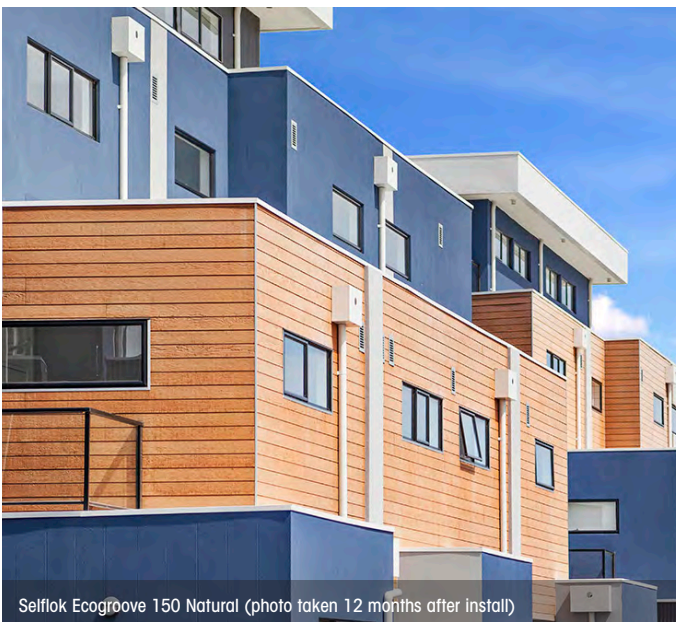
1220mm x 45mm  
9.5mm thickness  
For all cavity constructions



Weathergroove 150 Natural



Weathergroove 150 Natural (including garage door)



Selflok Ecogroove 150 Natural (photo taken 12 months after install)



Selflok Ecogroove 150 Natural (photo taken 4 years after install)





Weathergroove 150 Natural (aged)



Weathergroove 150 Natural







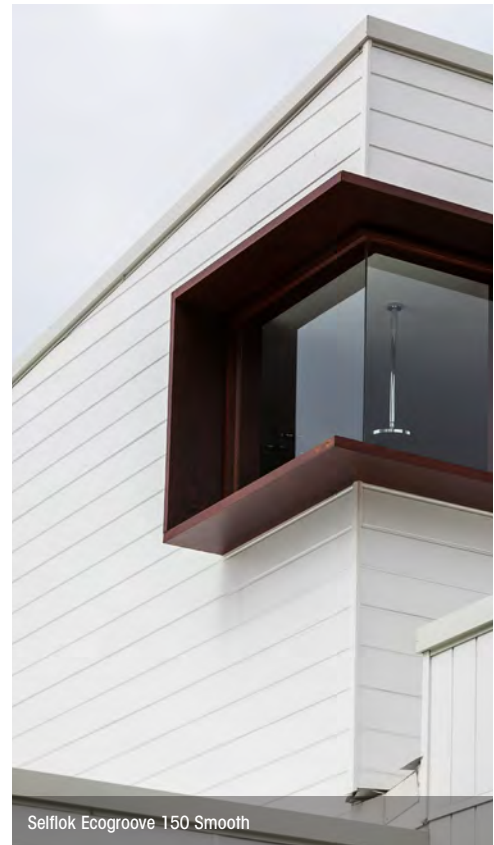
# Selflok Weatherboards

A favourite in the Weathertex family, Selflok flat panelled appearance is a fresh alternative to traditional lapped planks and perfectly suited for the modern home. Selflok weatherboards have the simplest horizontal shiplap joining method, which allows every board to self gauge. The precise routing gives the product that beautiful and unique ship lapped profile that makes it the first choice for many.

## Features & Benefits

- Durable product with a 25 year warranty.
- Lightweight product.
- Requires only standard DIY woodworking tools.
- All profiles can be direct fixed to frame within warranty.
- Cavity systems can be used as an option.
- Long vertical join for quicker installation and less risk for water ingress.
- Off stud joining option enables minimal waste and less timber stud layout.

Weathertex can be used internally and as an external wall cladding in bushfire attack levels up to and including BAL 19 construction.



Selflok Ecogroove 150 Smooth



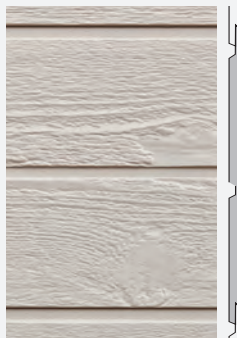
Download the  
installation manual



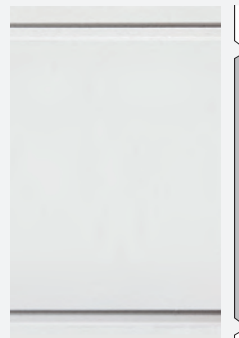
Cladding is 3660mm in length and 9.5 mm in thickness.



SELFLOK  
ECOGROOVE 150 ^  
SMOOTH  
Width: 300mm



SELFLOK  
ECOGROOVE 150 ^  
WOODSMAN  
Width: 300mm



SELFLOK  
ECOGROOVE 300 ^  
SMOOTH  
Width: 300mm



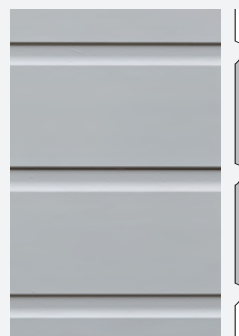
SELFLOK  
ECOGROOVE 300 ^  
WOODSMAN  
Width: 300mm



SELFLOK MILLWOOD  
SMOOTH  
Width: 300mm



SELFLOK MILLWOOD  
RUFF-SAWN  
Width: 300mm



SELFLOK TEXWOOD  
SMOOTH  
Width: 300mm



SELFLOK OLD COLONIAL  
SMOOTH  
Width: 300mm

^ Refers to groove spacing. Also available in natural.

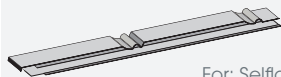
# Selflok Accessories

## Weathertex accessories

\*made from PC/ABS

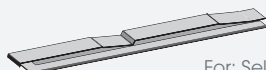
### MILLWOOD JOINERS

Available in Smooth & Ruff-Sawn



For: Selflok Millwood 300mm weatherboards

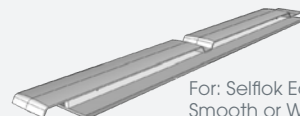
### OLD COLONIAL JOINERS



For: Selflok Old Colonial Smooth

### ECOGROOVE 150 JOINERS

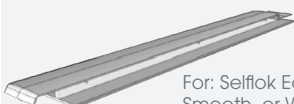
Available in Smooth & Woodgrain



For: Selflok Ecogroove 150 Smooth or Woodsman.

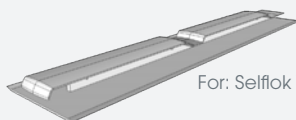
### ECOGROOVE 300 JOINERS

Available in Smooth & Woodgrain



For: Selflok Ecogroove 300 Smooth, or Woodsman.

### TEXWOOD JOINERS



For: Selflok Texwood Smooth

### 300MM CONCEALED JOINERS



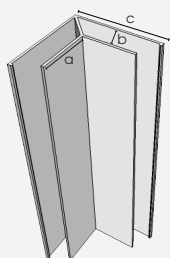
For all Selflok 300mm Weatherboards

Note: All joiners are installed off stud.

## Trimtec accessories

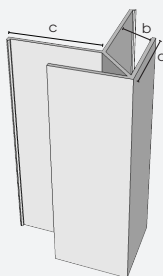
\*made from anodised aluminium

### SMALL INTERNAL LF CORNER



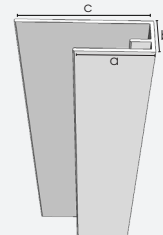
L = 3660mm  
a = 27mm  
b = 11mm  
c = 55mm

### SMALL EXTERNAL LF CORNER



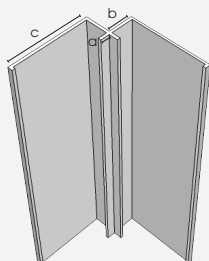
L = 3660mm  
a = 27mm  
b = 11mm  
c = 31mm

### SMALL END STOP



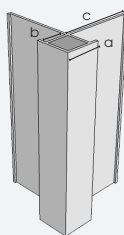
L = 3660mm  
a = 27mm  
b = 11mm  
c = 45mm

### SMALL INTERNAL CORNER



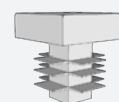
L = 3660mm  
a = 4mm  
b = 11mm  
c = 35mm

### SMALL EXTERNAL CORNER



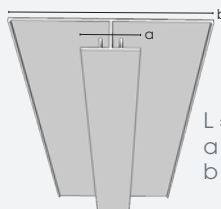
L = 3660mm  
a = 17mm  
b = 11mm  
c = 35mm

### SMALL CORNER PLUG



Use with the Small external corner

### LONG VERTICAL JOINER



L = 3660mm  
a = 20mm  
b = 70mm

### DEEP CHANNEL JOINER

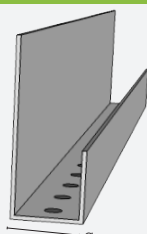


L = 3660mm  
a = 10mm  
b = 70mm

## Cavity wall system (optional)

### CAVITY CLOSER

L = 1830mm  
a = Lrg 20mm  
= Sml 10mm



### CAVITY BATTENS



1220mm x 45mm  
9.5mm thickness  
For all cavity constructions

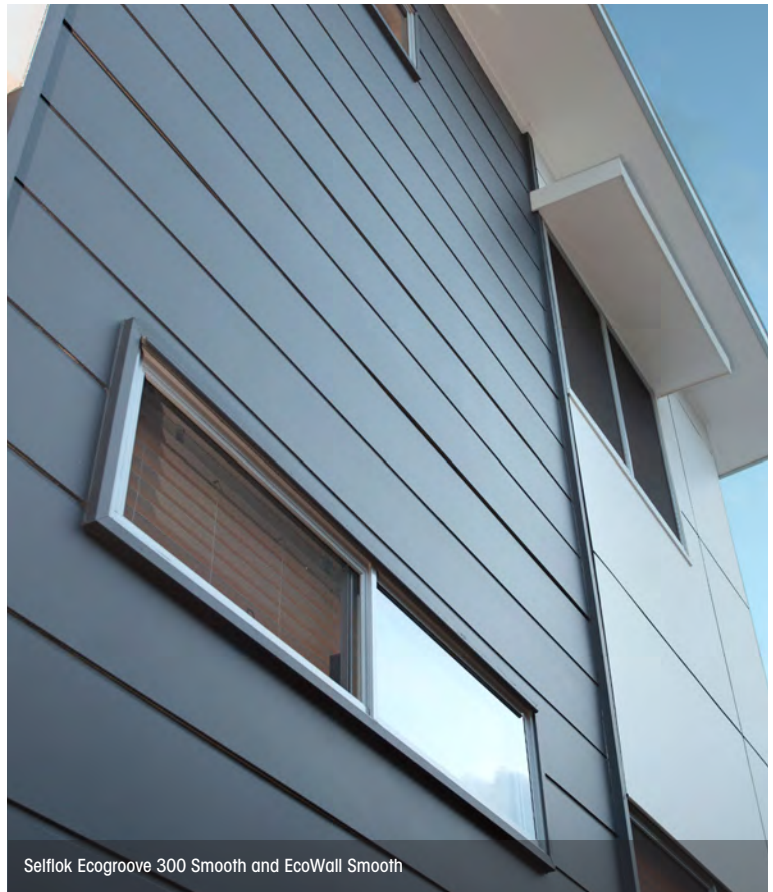


Selflok Millwood Ruff-Sawn





Selflok Ecogroove 300 Smooth



Selflok Ecogroove 300 Smooth and EcoWall Smooth



Selflok Ecogroove 150 and 300 Smooth





Sellflok Ecogroove 150 Smooth and Rubix



Sellflok Ecogroove 150 Smooth





Selflok Ecogroove 300 Smooth



Selflok Ecogroove 150 Smooth





Primelok 200 Smooth



# Primelok Weatherboards

Primelok is the most popular range for achieving traditional sophistication and elegance. Make your dream Hampton style home with Primelok, available in a range of profiles and textures, and perfect for your next project.

## Features & Benefits

- Lapping of board conceals fixings.
- Durable with a 25 year warranty.
- Off stud joining option enables minimal waste and less timber stud layout.
- Exclusive easy-aligning boards saving time and labour costs. Ideal for DIYers.
- Single person install.
- Preprimed value option range.

Weathertex can be used internally and as an external wall cladding in bushfire attack levels up to and including BAL 19 construction.



Primelok Shadowwood Smooth

Cladding is 3660 mm in length and 9.5 mm in thickness.



Download the installation manual



PRIMELOK  
SMOOTH

Width: 200mm



PRIMELOK  
RUFF-SAWN

Width: 200mm



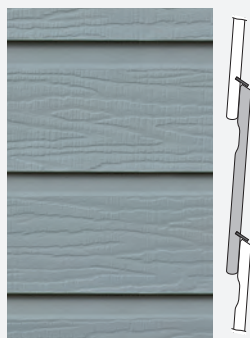
PRIMELOK  
WOODSMAN

Width: 200mm



PRIMELOK FEDERATION  
SMOOTH

Width: 170mm



PRIMELOK FEDERATION  
RUFF-SAWN

Width: 170mm



PRIMELOK  
SHADOWOOD SMOOTH

Width: 170mm

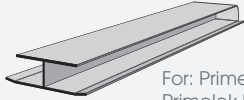
# Primelok Accessories

## Weathertex accessories

\*made from PC/ABS

### TRADITIONAL OFF STUD JOINER

Available in Smooth or Woodgrain



For: Primelok 200 smooth,  
Primelok Ruff-Sawn or  
Primelok Woodsman

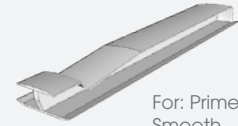
### FEDERATION JOINERS

Available in Smooth or Woodgrain



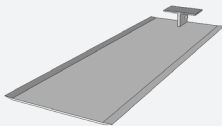
For: Primelok Federation Smooth  
or Primelok Federation Ruff-Sawn

### SHADOWOOD JOINERS



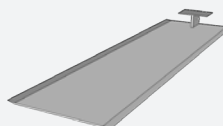
For: Primelok Shadowood  
Smooth

### 170MM CONCEALED JOINER



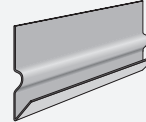
For: Primelok 170  
Weatherboards

### 200MM CONCEALED JOINER



For: Primelok 200mm  
Weatherboards

### PRIMELOK STARTER STRIP

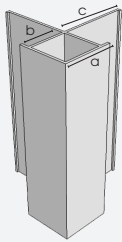


For: ALL Primelok  
Weatherboards  
L = 1830mm

## Trimtec accessories

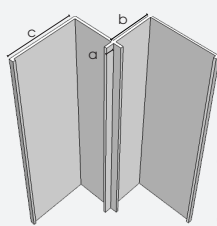
\*made from anodised aluminium

### LARGE EXTERNAL CORNER



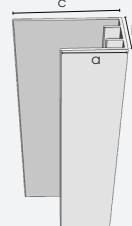
L = 3000mm  
a = 27mm  
b = 21mm  
c = 35mm

### LARGE INTERNAL CORNER



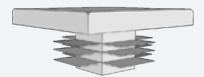
L = 3000mm  
a = 4mm  
b = 21mm  
c = 35mm

### LARGE END STOP



L = 3660mm  
a = 27mm  
b = 21mm  
c = 45mm

### LARGE CORNER PLUG



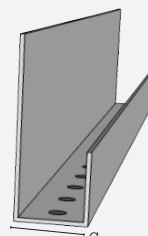
Use with Large  
External corner



## Cavity wall system (optional)

### CAVITY CLOSER

L = 1830mm  
a = Lrg 20mm  
= Sml 10mm



### CAVITY BATTENS



1220mm x 45mm  
9.5mm thickness  
For all cavity constructions





Primelok 200 Smooth



Primelok Shadowood Smooth









Primelok Shadowood Smooth



Primelok Federation Smooth







# Classic Weatherboards

Weathertex Classic weatherboards are truly an Australian classic. Choose Smooth or Ruff-Sawn surface finishes to create a clean, smart-looking home. They blend perfectly with other building materials providing limitless design and decorative solutions.

## Features & Benefits

- Durable with a 25 year warranty.
- Off stud joining option enables minimal waste and less timber stud layout.
- Suits a wide range of home designs and styles.
- Value option - perfect for renovations on a tight budget.
- 100% natural.
- Can be cut with standard carpentry tools.
- Preprimed.

Weathertex can be used internally and as an external wall cladding in bushfire attack levels up to and including BAL 19 construction.

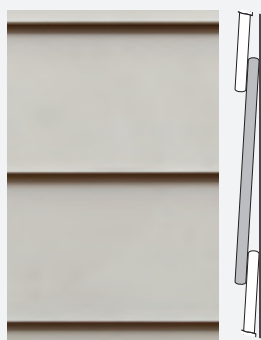


Classic 200 Smooth



Download the  
installation manual

Cladding is 3660 mm in length and 9.5 mm in thickness.



CLASSIC  
SMOOTH  
Width: 200 or 300 mm



CLASSIC  
RUFF-SAWN  
Width: 200 or 300 mm



CLASSIC RUSTICATED  
SMOOTH  
Width: 200mm



CLASSIC RUSTICATED  
RUFF-SAWN  
Width: 200mm





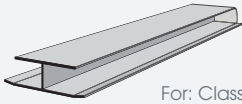
# Classic Accessories

## Weathertex accessories

\*made from PC/ABS

### TRADITIONAL OFF STUD JOINER

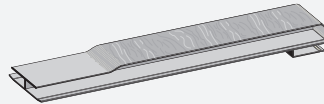
Available in 200 Smooth & Woodgrain.  
Only available in Smooth for 300.



For: Classic 200 Smooth, Classic 200 Ruff-Sawn, or Classic 300 Smooth

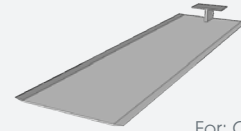
### RUSTICATED JOINERS

Available in Smooth and Ruff-Sawn



For: Classic Rusticated 200 Smooth or Classic Rusticated Ruff Sawn

### 200MM CONCEALED JOINER

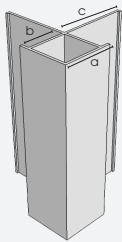


For: Classic 200mm Weatherboards.

## Trimtec accessories

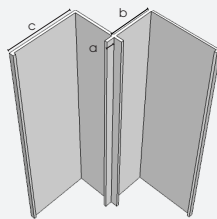
\*made from anodised aluminium

### LARGE EXTERNAL CORNER



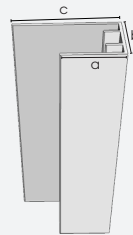
L = 3000mm  
a = 27mm  
b = 21mm  
c = 35mm

### LARGE INTERNAL CORNER



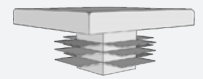
L = 3000mm  
a = 4mm  
b = 21mm  
c = 35mm

### LARGE END STOP

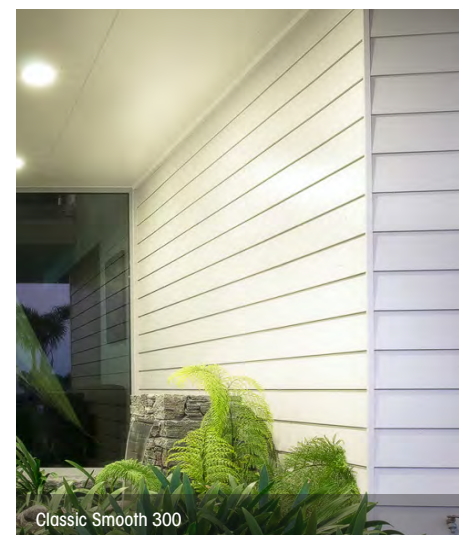
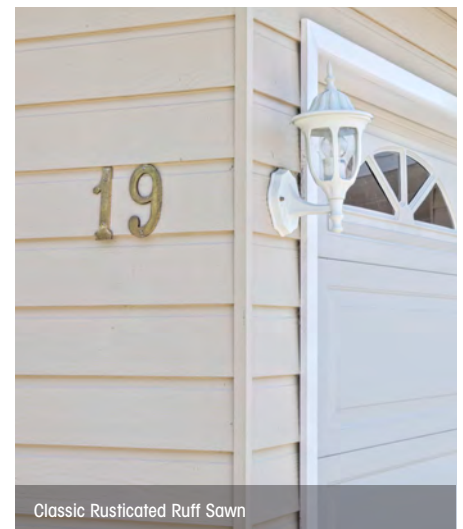


L = 3660mm  
a = 27mm  
b = 21mm  
c = 45mm

### LARGE CORNER PLUG



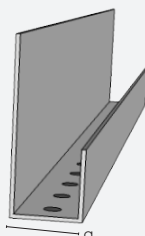
Use with Large External corner



## Cavity wall system (optional)

### CAVITY CLOSER

L = 1830mm  
a = Lrg 20mm  
= Sml 10mm

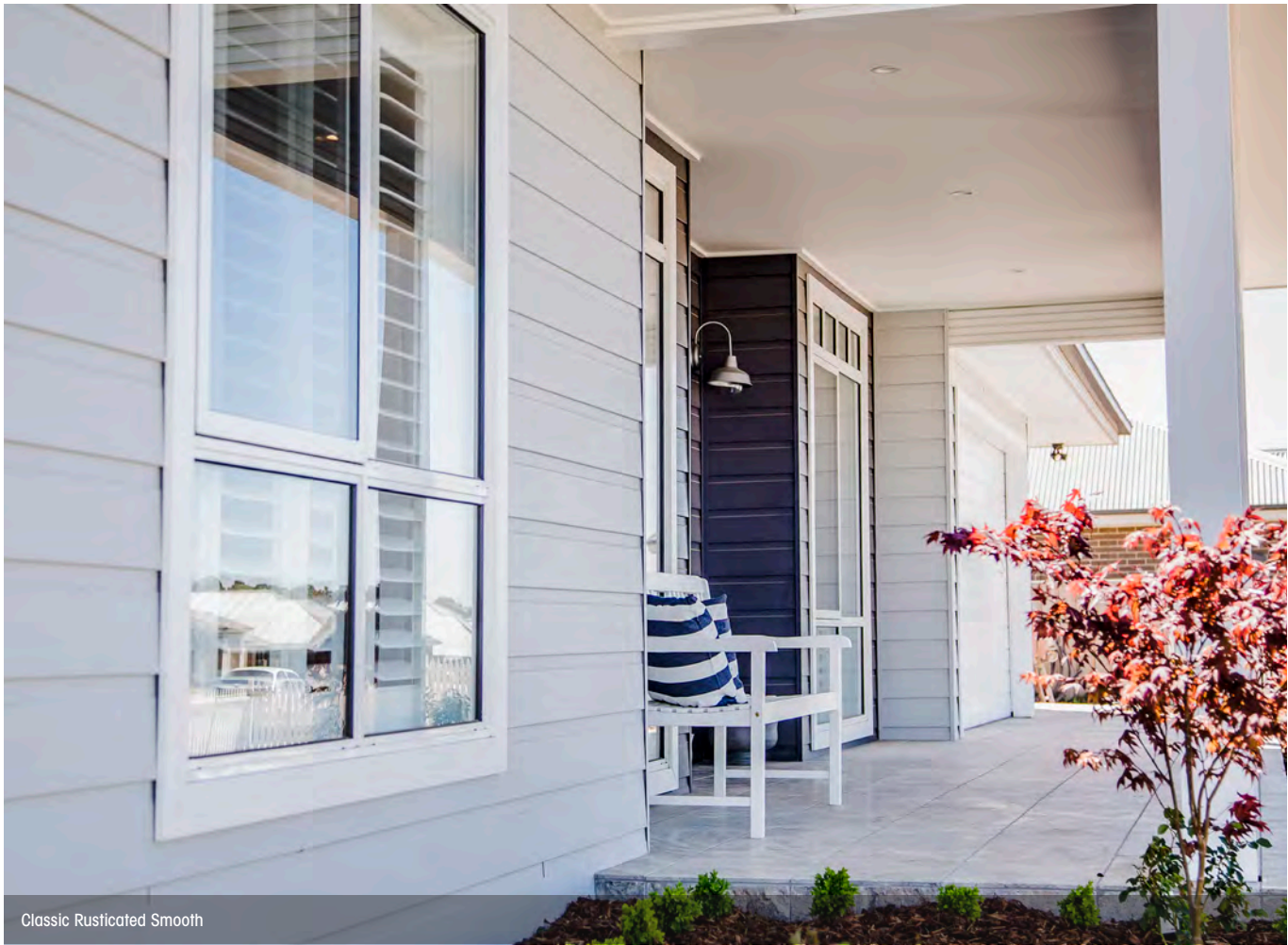


### CAVITY BATTENS

1220mm x 45mm  
9.5mm thickness  
For all cavity constructions







Classic Rusticated Smooth



Classic Smooth 200





Classic Smooth 200 and Weathergroove Natural 150



Classic Smooth 200





Classic 300 Smooth



Classic 200 Smooth

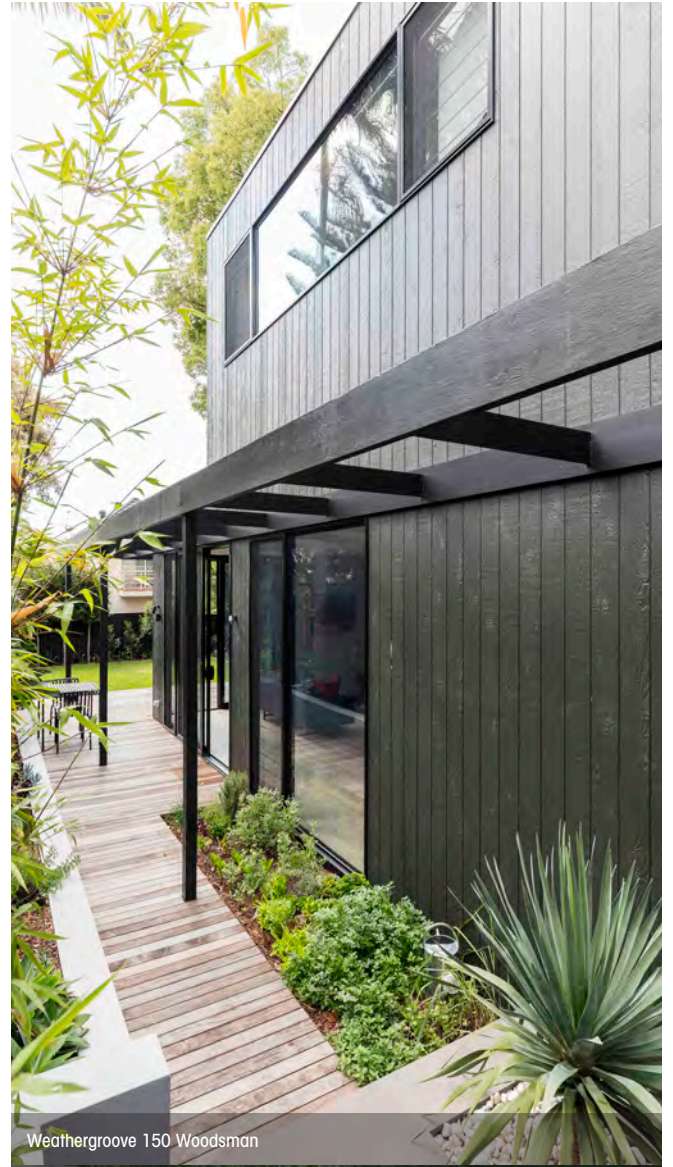


Classic Rusticated Smooth





Weathergroove 150 Smooth



Weathergroove 150 Woodsman



Weathergroove 150 Smooth



# Weathergroove Panels

Weathergroove is the ideal choice for the urban contemporary home. It's the largest panel available in the Australian market, making this vertically grooved panel ideal for covering large areas in a short time and it's versatility offers endless possibilities.

## Features & Benefits

- Largest panel size in Australia - 3.66m height.
- Off stud joining option enables minimal waste and less timber stud layout.
- Quick cost effective installation.
- No silicon or adhesives needed for joining.
- Range of joining systems for various design options.
- Deep vertical lines for a bold expression.
- Universal edge which makes it possible to flip and reuse offcuts.
- Durable with a 25 year warranty.

Weathergroove can be used internally and as an external wall cladding in bushfire attack levels up to and including BAL 19 construction.



Weathergroove 150 Smooth



Download the installation guide

NEW



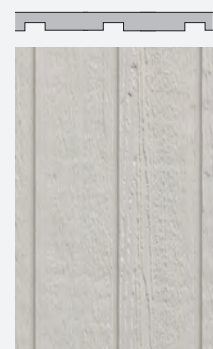
WEATHERGROOVE  
75 SMOOTH\*\*



WEATHERGROOVE  
150 SMOOTH



WEATHERGROOVE  
150 RUFF-SAWN



WEATHERGROOVE  
150 WOODSMAN

## WEATHERGROOVE SIZES

3660 x 1196mm  
2440 x 1196mm  
2745 x 1196mm

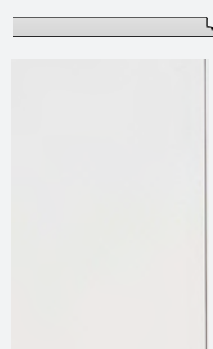
Thickness: 9.5mm



WEATHERGROOVE  
300 SMOOTH\*



WEATHERGROOVE  
600 SMOOTH\*



WEATHERGROOVE  
1200 SMOOTH\*

Available in Natural.

\* Only available in 3660mm x 1196mm and 2745mm x 1196mm.

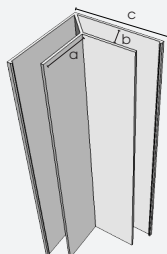
\*\* Only available in 3660mm x 1196mm.



# Weathergroove Accessories

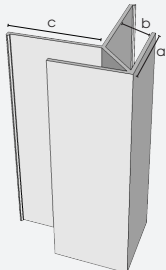
**Trimtec accessories** \*made from anodised aluminium

**SMALL INTERNAL LF CORNER**



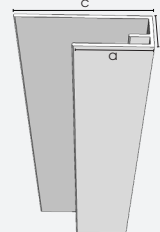
L = 3660mm  
a = 27mm  
b = 11mm  
c = 55mm

**SMALL EXTERNAL LF CORNER**



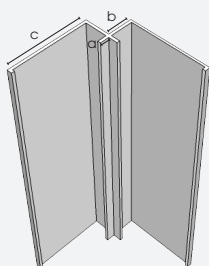
L = 3660mm  
a = 27mm  
b = 11mm  
c = 31mm

**SMALL END STOP**



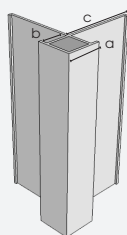
L = 3660mm  
a = 27mm  
b = 11mm  
c = 45mm

**SMALL INTERNAL CORNER**



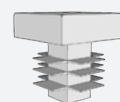
L = 3660mm  
a = 4mm  
b = 11mm  
c = 35mm

**SMALL EXTERNAL CORNER**



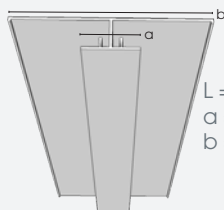
L = 3660mm  
a = 17mm  
b = 11mm  
c = 35mm

**SMALL CORNER PLUG**



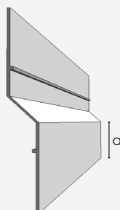
Use with the Small external corner

**LONG VERTICAL JOINER**



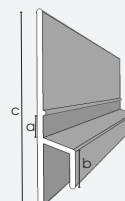
L = 3660mm  
a = 20mm  
b = 70mm

**Z FLASHING**



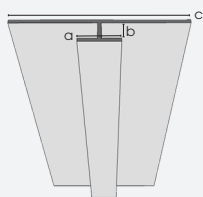
L = 3660mm  
a = 27mm

**SMALL Z FLASHING**

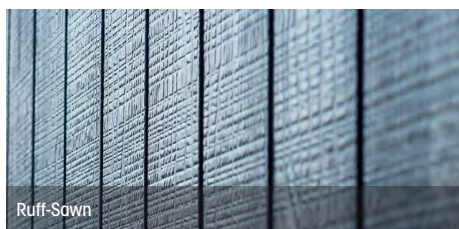
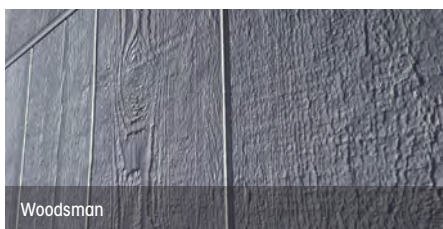


L = 3670mm  
a = 15mm  
b = 10mm  
c = 73mm

**WEATHERGROOVE JOINER**



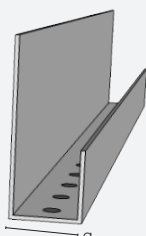
L = 3660mm  
a = 11mm  
b = 5mm  
c = 50mm



## Cavity wall system (optional)

**CAVITY CLOSER**

L = 1830mm  
a = Lrg 20mm  
= SmI 10mm



**CAVITY BATTENS**



1220mm x 45mm  
9.5mm thickness  
For all cavity constructions







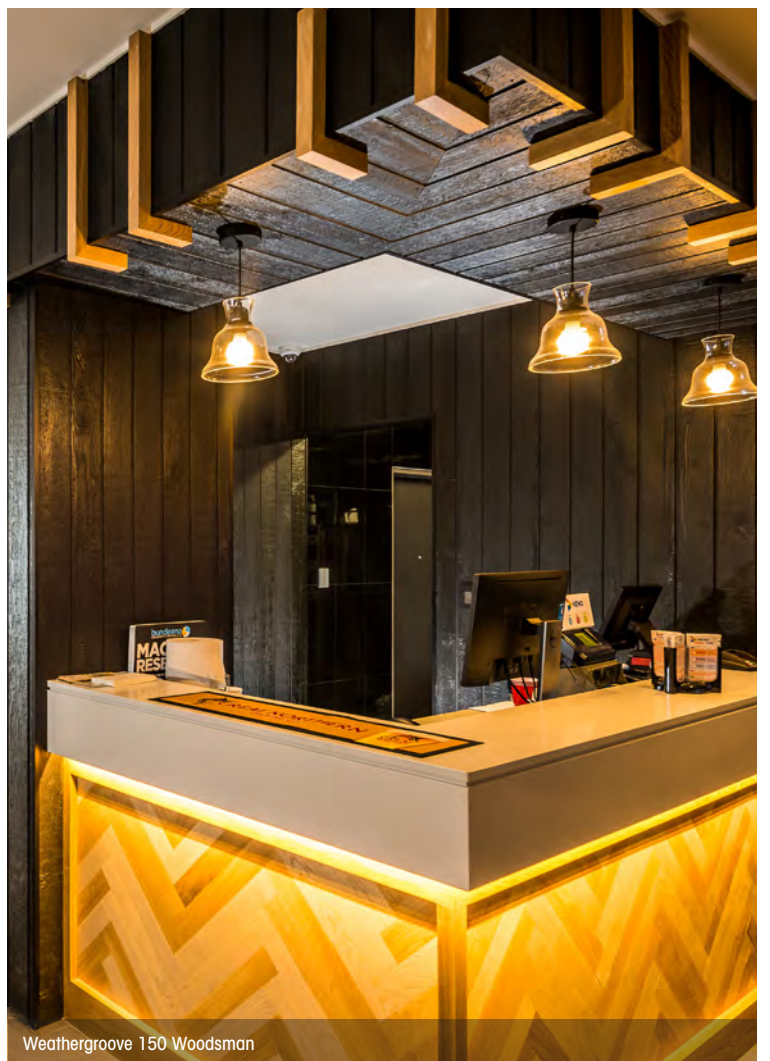






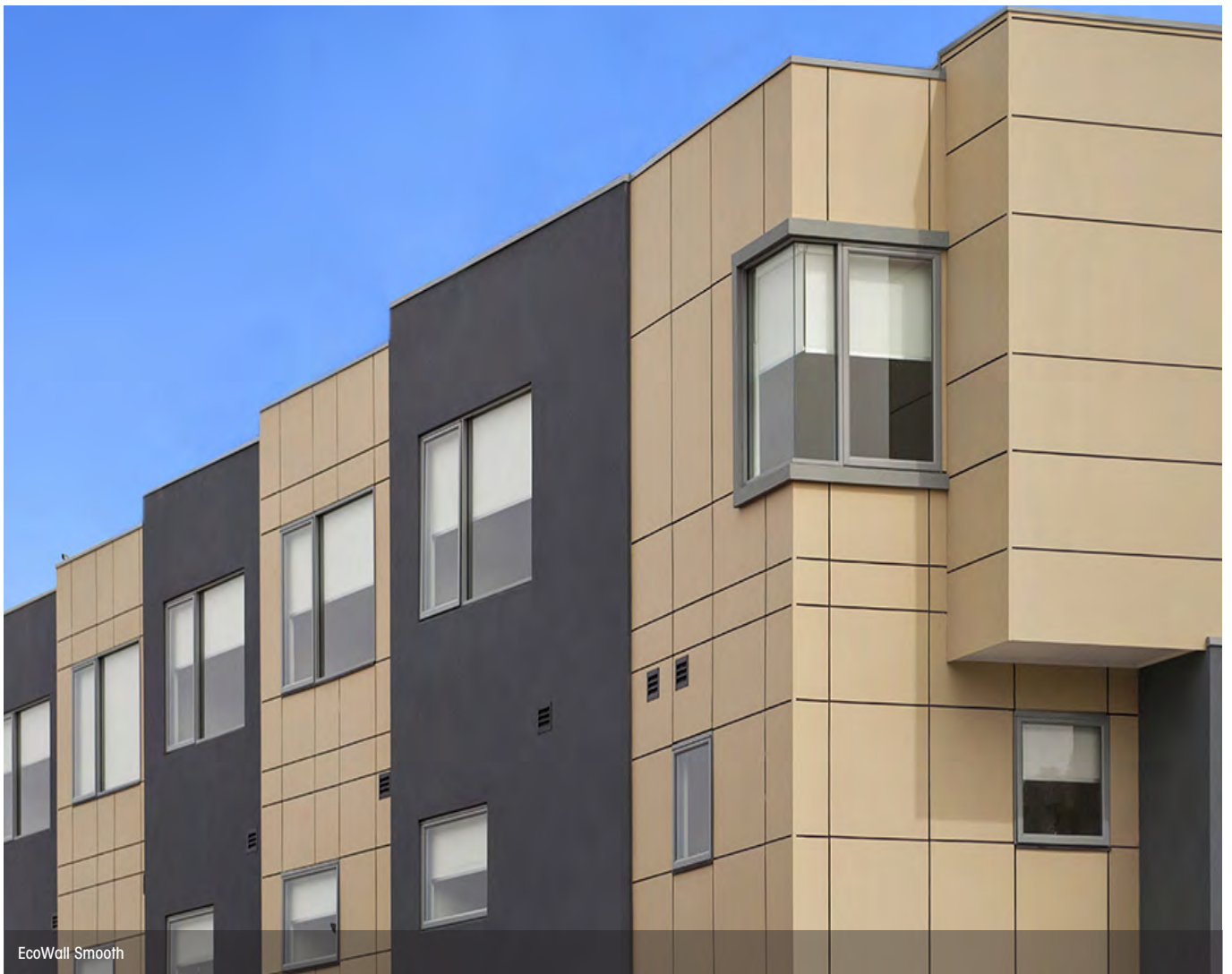


Weathergroove 150 Woodsman



Weathergroove 150 Woodsman





EcoWall Smooth



EcoWall Smooth



# EcoWall Panels

EcoWall is one of the most durable, high impact and versatile types of panel available. The possibility of both vertical and horizontal express jointing lends flexibility to the pattern of your choice. Whether a modern architecturally designed home or a large commercial project, the decorative applications are unlimited.

## Features & Benefits

- Direct to stud fix. No need to add cavity battens.
- No need for sealants.
- Can be cut to custom sizes to create innovative designs.
- Durable product with a 10 year warranty. Perfect for commercial projects like school halls, office spaces and apartments.
- Modern clean lines.

WeatherTex can be used internally and as an external wall cladding in bushfire attack levels up to and including BAL 19 construction.

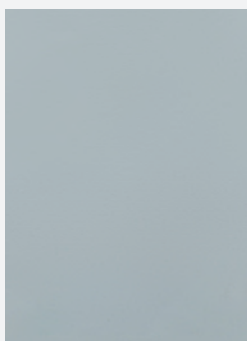
ECOWALL SMOOTH SIZES
3660 x 1220mm 2745 x 1220mm 2440 x 1220mm 1220 x 1220mm 1220 x 915mm
Thickness: 9.5mm



EcoWall Smooth



Download the  
installation manual



ECOWALL SMOOTH

Available in Natural.



ECOWALL WOODSMAN  
(Available in 3660mm only)

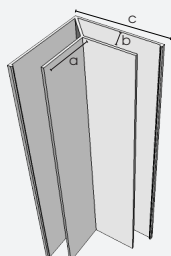


# EcoWall Accessories

## Trimtec accessories

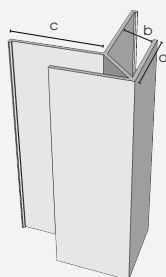
\*made from anodised aluminium

### SMALL INTERNAL LF CORNER



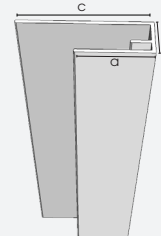
L = 3660mm  
a = 27mm  
b = 11mm  
c = 55mm

### SMALL EXTERNAL LF CORNER



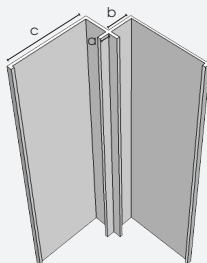
L = 3660mm  
a = 27mm  
b = 11mm  
c = 31mm

### SMALL END STOP



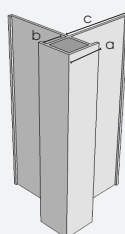
L = 3660mm  
a = 27mm  
b = 11mm  
c = 45mm

### SMALL INTERNAL CORNER



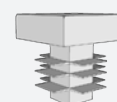
L = 3660mm  
a = 4mm  
b = 11mm  
c = 35mm

### SMALL EXTERNAL CORNER



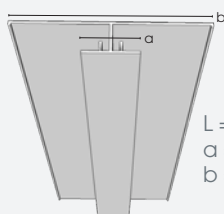
L = 3660mm  
a = 17mm  
b = 11mm  
c = 35mm

### SMALL CORNER PLUG



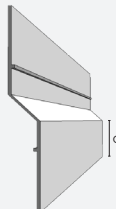
Use with the Small external corner

### LONG VERTICAL JOINER



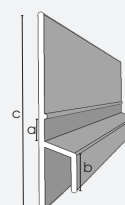
L = 3660mm  
a = 20mm  
b = 70mm

### Z FLASHING



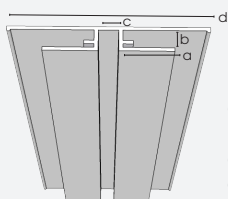
L = 3660mm  
a = 27mm

### SMALL Z FLASHING



L = 3670mm  
a = 15mm  
b = 10mm  
c = 73mm

### DEEP CHANNEL JOINER LF



L = 3660mm  
a = 27mm  
b = 11mm  
c = 10mm  
d = 100mm

### DEEP CHANNEL JOINER

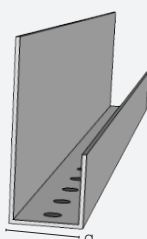


L = 3660mm  
a = 10mm  
b = 70mm

## Cavity wall system (optional)

### CAVITY CLOSER

L = 1830mm  
a = Lrg 20mm  
= 10mm



### CAVITY BATTENS



1220mm x 45mm  
9.5mm thickness  
For all cavity constructions



EcoWall Smooth (exposed fix)





EcoWall Smooth (board and batten installation)



EcoWall Woodsman















# Rubix Panels

Rubix Panel is a self-locking Architectural Panel available in square or rectangular panels that provides unprecedented flexibility and ease, since no Weatherex joining accessories are needed for installation. This helps to eliminate the puzzle that comes with other matrix style products.

## Features & Benefits

- Self locking system that doesn't need joining accessories.
- Rebated edges.
- Lightweight.
- Two sizes.
- Modern clean lines.
- Minimal wastage.
- Use various sizes to make unique geometric patterns.

Weatherex can be used as an external wall cladding in bushfire attack levels up to and including BAL 19 construction.



Download the  
installation manual



RUBIX PANEL  
SMOOTH

(IMAGE SHOWS 4 PANELS INTERLOCKING TOGETHER)

## RUBIX PANEL SIZES

1200 x 1200mm  
1200 x 900mm

Thickness: 9.5mm



# Rubix Accessories

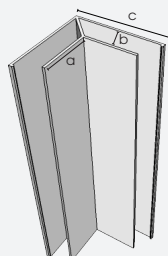
Rubix panel is self-locking, to be joined off-stud without Weathertex joiners.



## Trimtec accessories

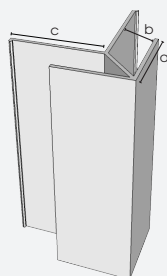
\*made from anodised aluminium

### SMALL INTERNAL LF CORNER



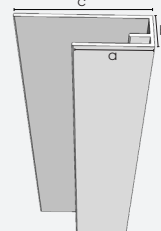
L = 3660mm  
a = 27mm  
b = 11mm  
c = 55mm

### SMALL EXTERNAL LF CORNER



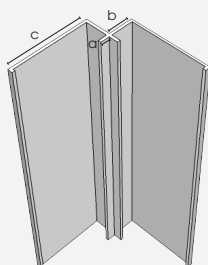
L = 3660mm  
a = 27mm  
b = 11mm  
c = 31mm

### SMALL END STOP



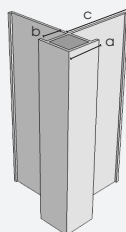
L = 3660mm  
a = 27mm  
b = 11mm  
c = 45mm

### SMALL INTERNAL CORNER



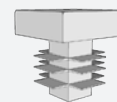
L = 3660mm  
a = 4mm  
b = 11mm  
c = 35mm

### SMALL EXTERNAL CORNER

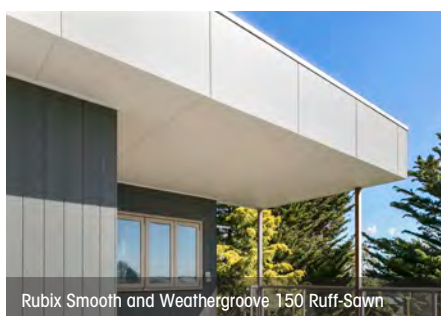


L = 3660mm  
a = 17mm  
b = 11mm  
c = 35mm

### SMALL CORNER PLUG



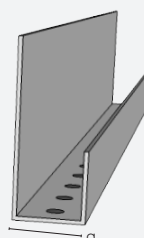
Use with the Small external corner



## Cavity wall system (required)

### CAVITY CLOSER

L = 1830mm  
a = Lrg 20mm  
= Sml 10mm



### CAVITY BATTENS



1220mm x 45mm  
9.5mm thickness  
For all cavity constructions



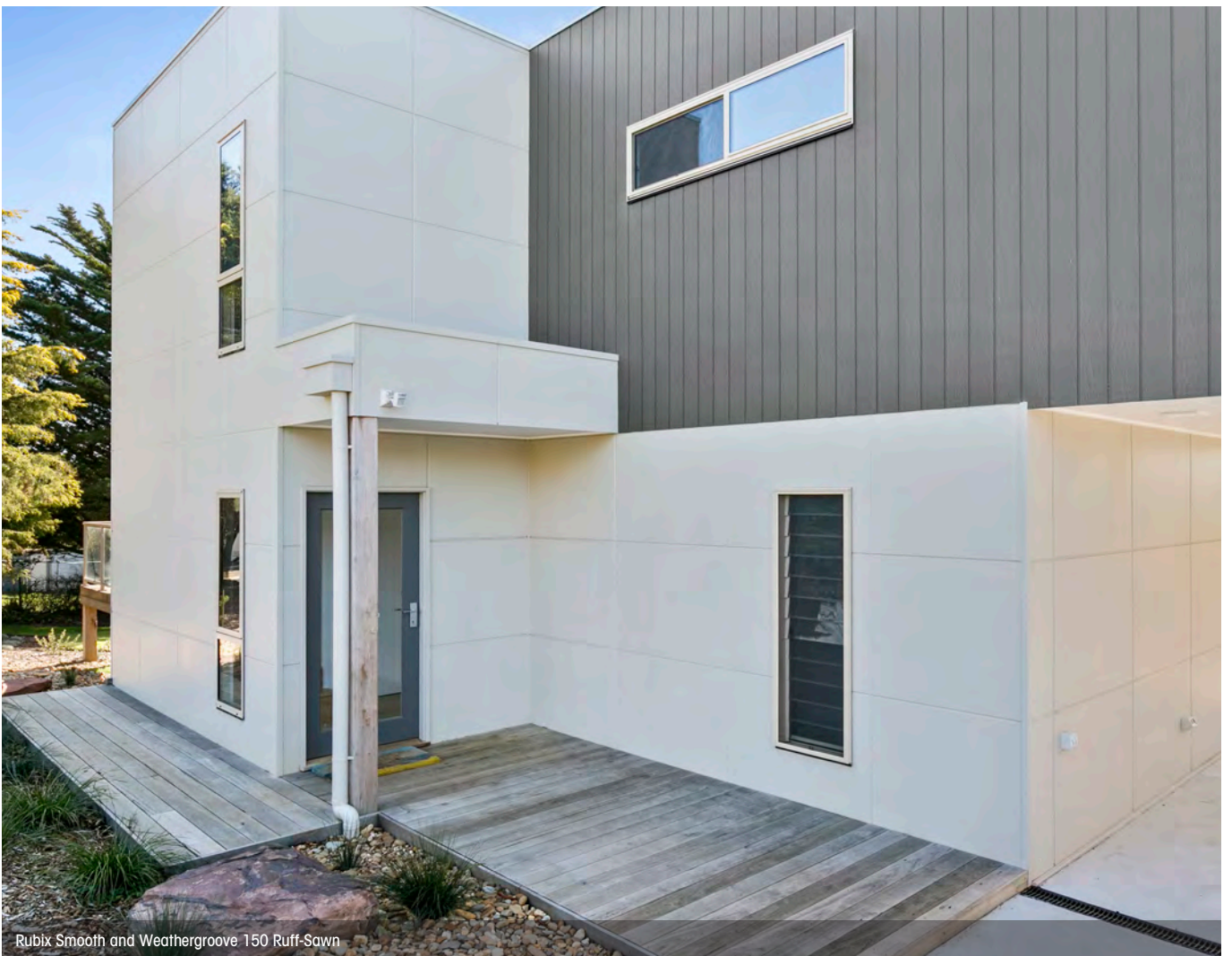


Rubix Smooth



Rubix Smooth and Weathergroove Natural 150













EcoWall Smooth, Weathergroove 150 Natural, Primelok Smooth

**TRUSTED BRANDS** 2016 2018  
ARCHITECTURE//DESIGN  
**#1 WINNER**

 **weathertex**  
a better choice, naturally

weathertex.com.au Ph: 1800 040 080 Fax: 1800 647 926



Last updated 20th Feb 2019

Disclaimer: Product Portfolio to be used only as a guide.

Always refer to the installation manual for correct installation & warranty.

Weathertex® is made in Australia by Weathertex Pty Ltd ABN 67 084 713 986  
PO Box 21, Raymond Terrace NSW 2324